



X-MART - deluxe



- **Deluxe low profile axial fans with Fixed Shutter**
- **Stainless steel or white**
- **18 models**
- **IPX4 - Splashproof**
- **3 sizes for toilets, shower-rooms, bathrooms, utility rooms and kitchens**
- **For walls, ceilings or windows (with window kit)**
- **Standard, Timer and Humidity Control**
- **Exceeds Building Regulations requirements (including new Document F)**

GENERAL

- axial fans to exhaust air and fumes directly outside or through short lengths of ducting
- new, technically innovative, to complement modern decor
- indicator light to show when operating
- front easily removed (no screws) for cleaning
- quick fit installation system for walls
- easy plasterboard ceiling installation with (optional) Ceiling Ring
- window installation requires window kit
- protection against backdraughts
- quiet operation
- adjustable timer - 3-15 minutes
- dynamic humidistat with night-time set back and anti-hunting device
- **IPX4 - Splashproof** - can safely be installed in Zones I and II

SPECIFICATION

- casings from shockproof and heat resistant plastics
- double insulated motors of shaded pole type mounted on self-lubricating, sealed ball bearings for long life
- motors fitted with thermal safety cut-out
- maximum ambient temperature - 40°C

COMPLY WITH

- EN60335-2-80
- EC Low Voltage Directive 73/23-93/68
- EC Directive EMC89/336
- CE marked

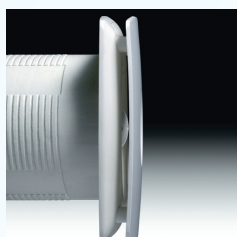
RANGE

White:

- **XM 10, 12, 15** - standard
- **XM 10T, 12T, 15T** - overrun timer
- **XM 10H, 12H, 15H** - humidity control and overrun timer

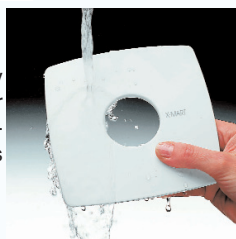
Stainless Steel:

- **XM 10SS, 12SS, 15SS** - standard
- **XM 10TSS, 12TSS, 15TSS** - overrun timer
- **XM 10HSS, 12HSS, 15HSS** - humidity control and overrun timer



Standard fans - profile

Front easily removable for cleaning - no screws



Easy electrical connection - just lift protection lid

TYPICAL SPECIFICATION

Supply and install an XM10HSS axial fan with a stainless steel front cover as supplied by Vectaire Ltd, Lincoln Road, Cressex Business Park, High Wycombe, Bucks, HP12 3RH.

The fan is to be suitable for installation either into a ceiling, wall or window (with the appropriate accessories), and be complete with an integral, adjustable, dynamic humidistat and an integral adjustable timer. There should be a neon on the front of the fan to indicate when it is operating. The fan casing should be made of shockproof and heat resistant plastic, contain a motor with sealed, self-lubricating bearings, and be protected with a thermal cut-out. The fan should be double insulated and be suitable for installation into Zones I and II.

The fan is to be CE marked and comply with current EC Low Voltage Directive EMC89/336 and with BSEN60529. The fan should comply with Building Regulations requirements for installation into a bathroom or shower room.



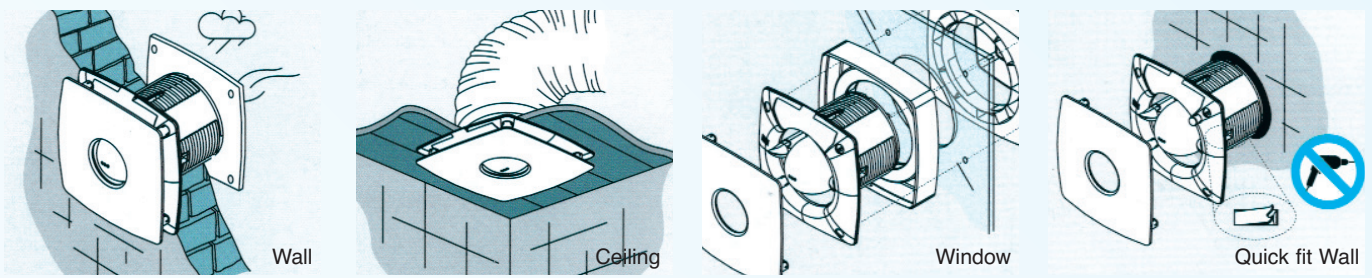
Tel: +44(0)1494 522333
Fax: +44(0)1494 522337

Vectaire Ltd
Lincoln Road, Cressex Business Park
High Wycombe, Buckinghamshire, HP12 3RH

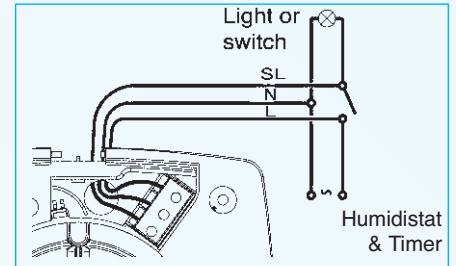
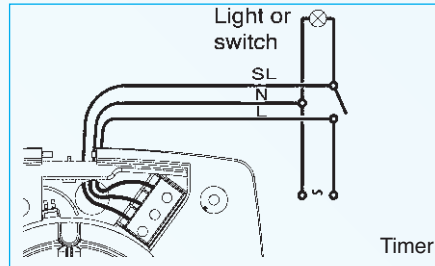
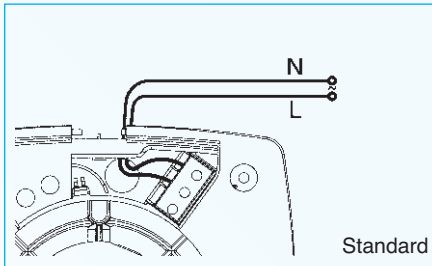
Email: sales@vectaire.co.uk
Web: www.vectaire.co.uk

TECHNICAL CHARACTERISTICS

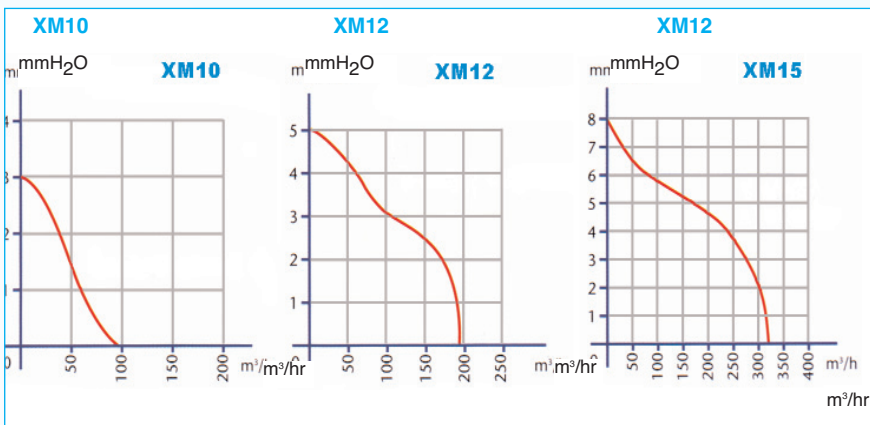
INSTALLATIONS



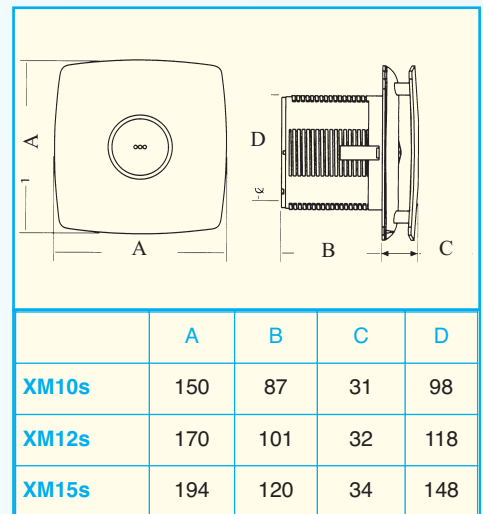
WIRING DIAGRAMS



PRESSURE CURVE



DIMENSIONS



TECHNICAL DATA

Model	m ³ /hr	litres/sec	Max mmH ₂ O	Max Pa	Volts	Hz	Watts	dbA	Hole dia mm	IPX4	Weight kg
X-MART 10s	98	27	3	29	230	50	15	38	100	yes	0.64
X-MART 12s	190	53	5	49	230	50	20	40	120	yes	0.85
X-MART 15s	320	89	8	78	230	50	25	42	150	yes	1.02

ACCESSORIES



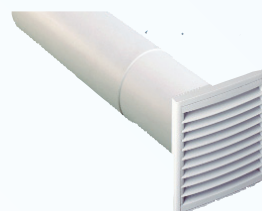
Fixed Grille



Gravity Grille



Wall Vent Kit



Wall Duct Kit



Ceiling Ring



Window Kit

FULL RANGE OF ACCESSORIES AVAILABLE INCLUDING FLEXIBLE AND FLAT DUCTING