



"RA" - recessed



- **Slimline ultra low profile axial fans**
- **12 models**
- **IPX4 - Splashproof**
- **3 sizes for toilets, shower-rooms, bathrooms, utility rooms and kitchens**
- **For walls, ceilings or windows (with window kit)**
- **Standard, Timer, Humidity Control and Pull Cord**
- **Exceeds Building Regulations requirements (including new Document F requirements)**
- **BEAB APPROVED**

GENERAL

- axial fans to exhaust air and fumes directly outside or through short lengths of ducting
- recessed design - from 8mm projection
- quick fix wall installation - no screws
- adjustable timer - 3-15 minutes
- dynamic humidistat with night time set back and anti-hunting device
- "T" and "HT" models have quick fit terminal block
- easy plasterboard ceiling installation with (optional) Ceiling Ring
- backdraught shutter available for 4"/10cm models
- 5"/12cm and 6"/15cm models with back-draught shutter
- whisper quiet operation
- **IPX4 - Splashproof** - can safely be installed in Zones I and II

SPECIFICATION

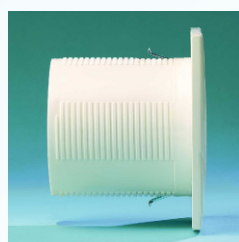
- casings from shockproof and heat resistant plastics
- double insulated motors of shaded pole type mounted on self-lubricating, sealed ball bearings for long life
- motors incorporate thermal cut-out
- maximum ambient temperature - 40°C

COMPLY WITH

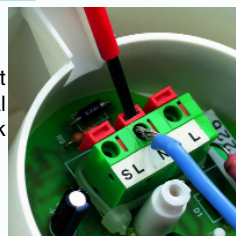
- EN60335-2-80
- EC Low Voltage Directive 73/23-93/68
- EC Directive EMC89/336
- CE marked
- **BEAB Approved**

RANGE

- **RA10/4, 12/5, 15/6** - standard
- **RA 10/4C, 12/5C, 15/6C** - pull cord operation (not suitable for window or ceiling installation)
- **RA 10/4T, 12/5T, 15/6T** - overrun timer
- **RA 10/4HT, 12/5HT, 15/6HT** - humidity control and overrun timer



ultra slim profile



quick fit terminal block



quick fix wall installation

TYPICAL SPECIFICATION

Supply and install an RA10/4HT recessed axial toilet/bathroom/shower-room fan as supplied by Vectaire Ltd, Lincoln Road, Cressex Business Park, High Wycombe, Bucks, HP12 3RH.

The fan is to be suitable for installation, either in a ceiling, wall or window, and be complete with an integral adjustable timer and dynamic humidistat.

The fan should be made of shockproof and heat resistant plastic, contain a motor with sealed, self-lubricating bearings, and be protected with a thermal cut out.

The fan should be double insulated, have a quick-fix terminal block, and be suitable for installation into Zones I and II.

Fan to comply with all current IEE, EC and Building Regulations requirements for installation into a toilet/bathroom or shower-room and be BEAB Approved.



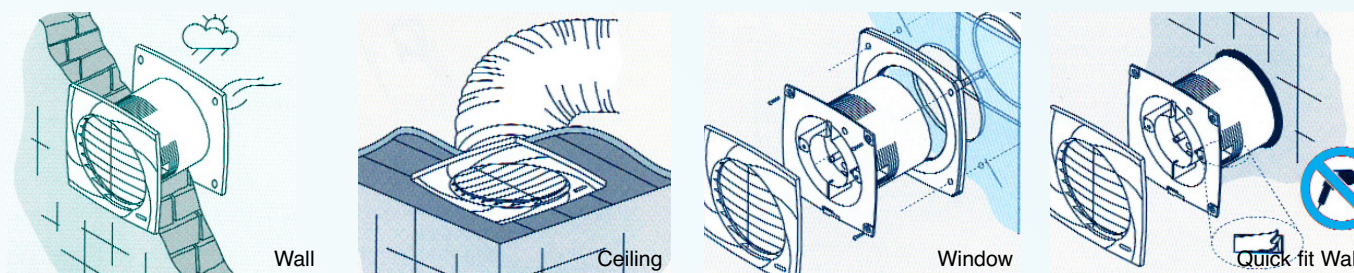
Tel: +44(0)1494 522333
Fax: +44(0)1494 522337

Vectaire Ltd
Lincoln Road, Cressex Business Park
High Wycombe, Buckinghamshire, HP12 3RH

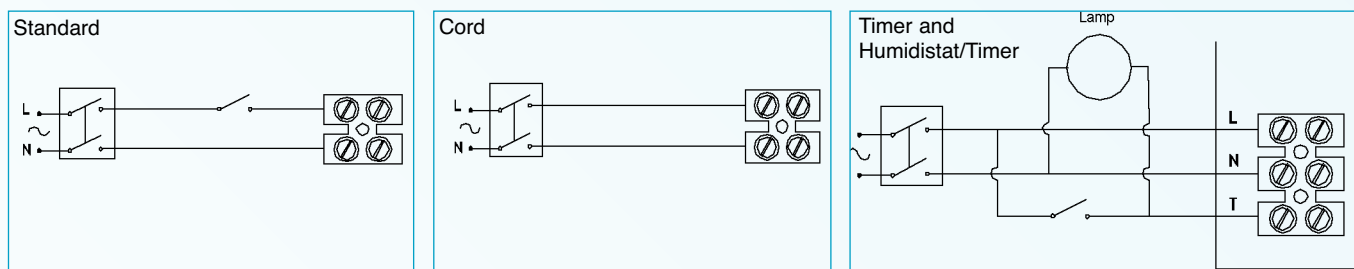
Email: sales@vectaire.co.uk
Web: www.vectaire.co.uk

TECHNICAL CHARACTERISTICS

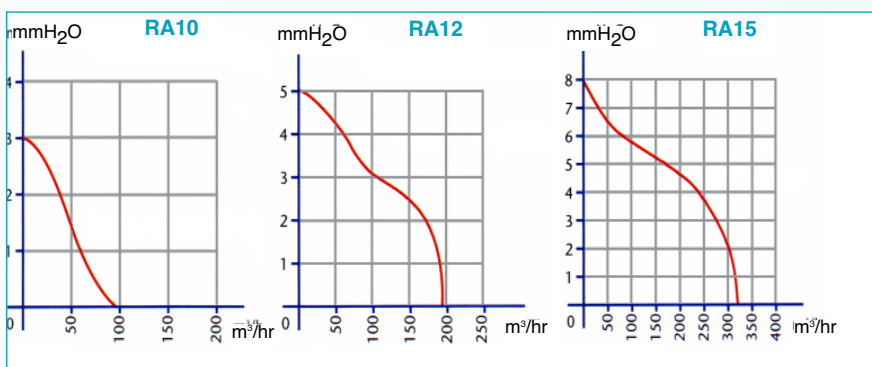
INSTALLATIONS



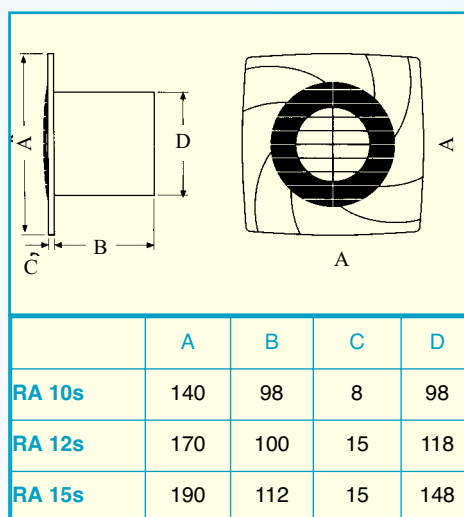
WIRING DIAGRAMS



PRESSURE CURVE



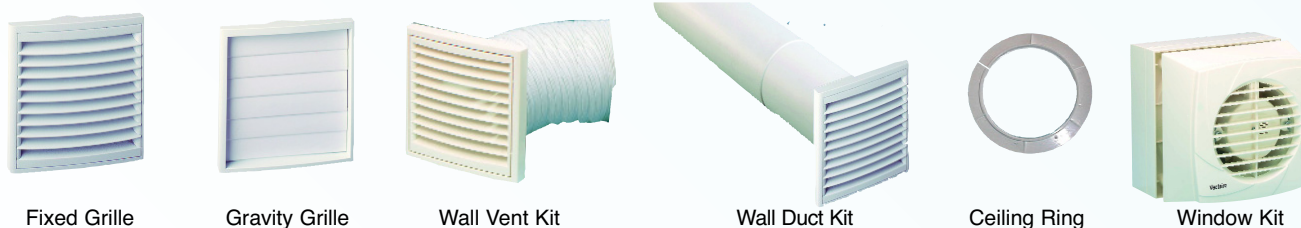
DIMENSIONS



TECHNICAL DATA

Model	m³/hr	litres/sec	Max mmH ₂ O	Max Pa	Volts	Hz	Watts	dbA	Hole dia mm	IPX4	Weight kg
RA 10s	98	27	3	29	230	50	15	39	100	yes	0.6
RA 12s	190	53	5	49	230	50	20	41	120	yes	0.8
RA 15s	320	89	8	78	230	50	25	41	150	yes	0.9

ACCESSORIES



FULL RANGE OF ACCESSORIES AVAILABLE INCLUDING FLEXIBLE AND FLAT DUCTING

Tel: +44(0)1494 522333
 Fax: +44(0)1494 522337

Vectaire Ltd
 Lincoln Road, Cressex Business Park
 High Wycombe, Buckinghamshire, HP12 3RH

Email: sales@vectaire.co.uk
 Web: www.vectaire.co.uk